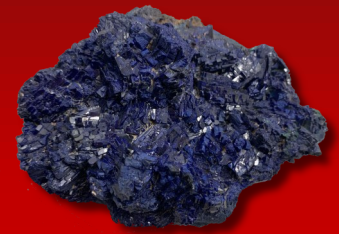


Mineral Identification with Spectral Evolution Spectrometers and EZ-ID™

Gold

- ▶ Illite, kaolinite, chlorite, illite/smectite, epidote, buddingtonite, montmorillonite, zeolite, hematite, alunite, dickite, pyrophyllite, diaspora, zunyite, montmorillonite, goethite, jarosite, muscovite, sericite, roscoelite, siderite, ankerite, calcite, dolomite, carbonates



Copper

- ▶ Azurite, malachite, chrysocolla, muscovite, tourmaline, alunite, illite, jarosite, goethite, hematite, mica, kaolinite, copper sulphate overprinting muscovite



Rare Earths

- ▶ Heavy (HREEs): monazite, xenotime
- ▶ Light (LREEs): allanite, apatite, bastnaesite, cerite, monazite

Lithium

- ▶ Lepidolite, spodumene, hectorite

Cobalt

- ▶ Cobaltite, erythrite

Silver

- ▶ Galena, acanthite



26 Parkridge Road ♦ Suite 104

Haverhill, MA 01835 USA

Tel: 978 687-1833 ♦ Fax: 978 945-0372

Email: sales@spectralevolution.com

www.spectralevolution.com

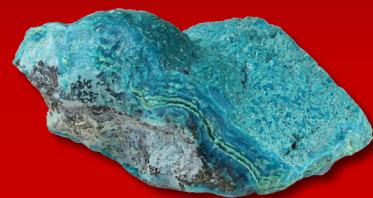
Mineral Identification with Spectral Evolution Spectrometers and EZ-ID™

Nickel

- ▶ Nickel sulfide: pentlandite, pyrrohotite, chalcopyrite, pyrite, pyroxenes
- ▶ Laterites: nickeliferous limonite, goethite, nontronite, garnierite

Zinc

- ▶ Sphalerite, smithsonite, willemite, hemimorphite



Iron

- ▶ Hematite, goethite, magnetite, jarosite

Kimberlites

- ▶ Serpentine, saponite, chlorite, olivine



Uranium

- ▶ Uraninite, sericite, chalcopyrite, chlorite, kaolinite, dickite, pyrite

Garnet

- ▶ Almandine, uvarovite, pyrope, grossular, spessartine, andradite

Limestone

- ▶ Calcite, dolomite

Lead

- ▶ Galena, cerussite



26 Parkridge Road ♦ Suite 104

Haverhill, MA 01835 USA

Tel: 978 687-1833 ♦ Fax: 978 945-0372

Email: sales@spectralevolution.com

www.spectralevolution.com